

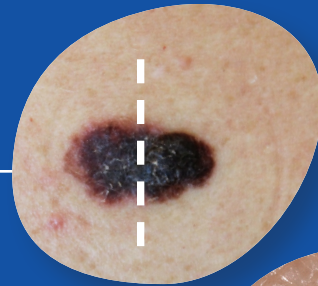
# BESKINSMART

When checking for signs of **skin cancer/melanoma**, look for the following signs this summer

## A

### Asymmetric moles:

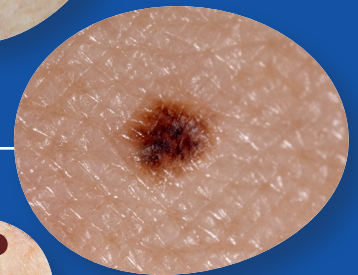
A change in shape: one half is unlike the other.



## B

### Border of a mole:

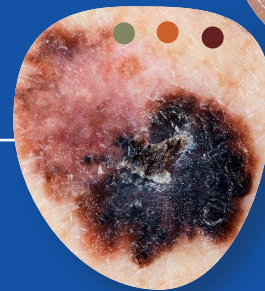
A change in the edges: they look blurred or jagged.



## C

### Colour of a mole:

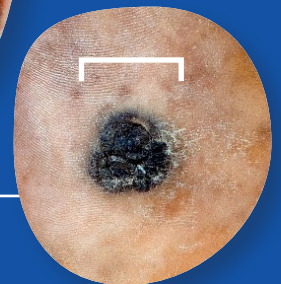
A change in the colour or differences within the mole: shades of tan, brown, black, or even white, red or blue.



## D

### Diameter (width) of a mole:

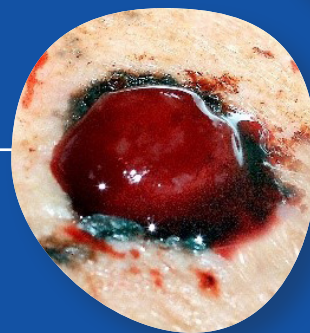
Any change in size. Most melanomas are larger than 6mm (the size of the top of a pencil) and keep growing.



## E

### Evolving:

Melanoma moles often change, or evolve.



*Not sure?  
Call  
your GP!*



Skin changes like spots and sores are common and can be caused by other things. But if you have a spot, mole, or sore that looks unusual or broken skin (ulcer) that doesn't heal within 4 weeks, always get it checked by your GP.

Get any unusual changes checked out. For more information call our Support Line: 1800 200 700



**Irish  
Cancer  
Society**