

Childhood Cancer

For more information call our Support Line on **Freephone 1800 200 700** or email supportline@irishcancer.ie

250

children and teenagers up to 19 years old are diagnosed with cancer each year in Ireland.



Approx.

1/400

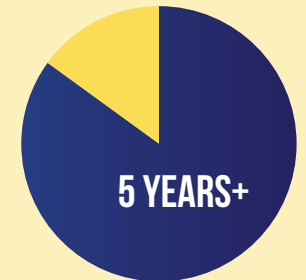
children under 15 years will get cancer in Ireland annually.



Almost

82%

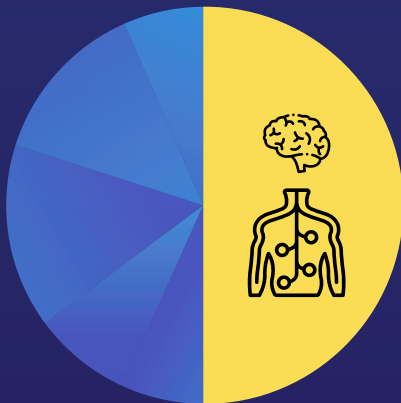
children in Ireland survive their cancer for 5 years or more.



On average

50%

of all childhood cancers are leukaemia, lymphoma, tumours of the brain and central nervous system.



Nothing you did or didn't do as a parent caused your child's cancer.

Spotting cancer in children and young people can be difficult. This is because cancer symptoms in children can be vague and similar to childhood illnesses.

Most often, signs and symptoms won't mean cancer, but if you are worried get them checked out by your GP.

All figures are from NCRI statistics up to 19 years old.

 @IrishCancerSoc

 @IrishCancerSociety

 @irishcancersociety

 Cancer.ie

 **Irish
Cancer
Society**

Some symptoms of childhood cancers



Flu like symptoms that don't clear up – such as temperature, feeling very tired



Changes in eyesight, such as a squint, vision problems or eye changes, such as eye pain or a white glow in photos



Swollen tummy area



Blood in pee or poo



Unexplained bruising / petechia (bleeding under the skin that appears like a rash)



Loss of appetite, or Unexplained weight loss



Persistent headaches and early morning vomiting



A lump, swelling or painful area that doesn't go away



Balance / coordination / speech problems



Swollen lymph nodes lasting for more than a week or two (e.g. in the neck, groin)



Regular unexplained night sweats or high temperatures



Feeling very tired most of the time



Fits or seizures






Feeling sick (nausea) or getting sick (vomiting) for a prolonged period



Lasting bone or joint pain, or a limp



 @IrishCancerSoc
 @IrishCancerSociety
 @irishcancersociety

 Cancer.ie

