

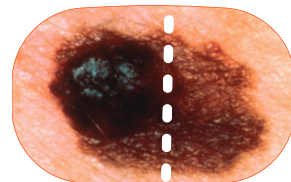
# Melanoma

# Skin Cancer

spot changes in your moles

## **A** is for asymmetrical

Is one half of the mole unlike the other half?



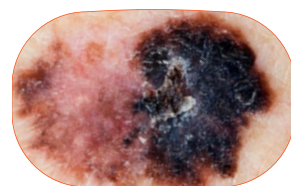
## **B** is for border

Are the edges of the mole blurred, or jagged?



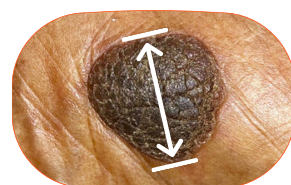
## **C** is for colour

Has all or part of the mole changed colour?



## **D** is for diameter

Has any mole changed size? Are any moles larger than the top of a pencil?



## **E** is for evolving

Have any of your moles changed?



**Spot something?  
See your GP!**

Call our Support Line on Freephone 1800 200 700  
or email [supportline@irishcancer.ie](mailto:supportline@irishcancer.ie)