
The **immune system**

helps to protect your body from disease.

The **lymphatic system**

is part of the immune system.

Lymphoma is cancer of the lymphatic system.

There are 2 kinds of lymphoma:

Hodgkin

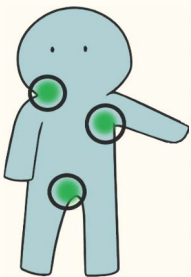
vs

Non-Hodgkin

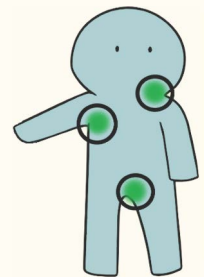
150 people diagnosed
each year in Ireland

850 people diagnosed
each year in Ireland

Lymphoma symptoms



A painless lump in your neck, armpit or groin
that may come and go



Other symptoms include:

- Night sweats
- High temperatures or fevers
- Loss of appetite
- Unexplained weight loss
- Feeling tired all the time
- Itchy skin or rash